



**GIVE A HEAD-START  
TO A PROMISING CAREER**



**MAKE A  
SMART CHOICE  
EXPLORE ENDLESS  
POSSIBILITIES**



**PROSPECTUS 2022**

# TABLE OF CONTENTS

1	From the President's Desk	03	17.	Research	29
2	About The University	04	18.	KL College of Commerce	31
3	Connectivity	04	19.	KL College Science & Humanities	35
4	Life at KLH	05	20.	Cloud Technology & Information Security	38
5	Technical Festival	05	21.	Artificial Intelligence	38
6	Facilities	06	22.	Data Science	38
7	Research @ KLH	07	23.	Department of International Relations (Global outreach)	39
8	Awards and Honors	07	24.	Centers of Excellence	41
9	Centers of Excellence and Research Labs	08	25.	Computing Facilities	41
10	Major R & D Highlights	08	26.	Library	42
11	Academia Learning	09	27.	University Infrastructure	42
12	Entrepreneurship and Start-ups	10	28.	Academics at KLH	43
13	Skilling That Leads To KLH / Placements	11	29.	Faculty - our strength (Hyderabad campus)	46
	Objective of the Placement Program:	12	30.	Industry Relations	46
	Pre-Placement Activities		31.	Placements	47
	PHASE-A		32.	International Relations	47
	PHASE-B		33.	Semester Abroad	47
	PHASE-C		34.	Study Tour	48
	PHASE-D		35.	Students Exchange	48
14.	Extracurricular Activities	13	36.	Internship Abroad	48
15.	Programs Offered at KLH	14	37.	Customized Summer Internship	48
15.1.	School of Engineering	15	38.	2+2 Program	48
15.2	B.Tech in Computer Science & Engineering	16	39.	3 + 1 Program (Special Program)	48
15.3	B.Tech in Artificial Intelligence & Data Science	20	40.	3+1+1 Programs (Special Program)	48
15.4	B.Tech in Electronics & Communication Engineering:	23	41.	Flexible Add-ons like International Youth Leadership Award	49
16.	School Of Business:	27	42.	Joint Research and Guidance under Foreign Supervisors	49
16.1.	Master of Business Administration:	28	43.	Foreign Languages Offered	49
16.2.	Bachelors of Business Administration	28			

# FROM THE PRESIDENT'S DESK



As we're all set to enter the third decade of the millennium, planning for a new academic year filled with hopes, aspirations and dreams of scaling to new heights, let's stop and take a minute to reflect on the journey we've undertaken so far. Our institute, KL (Deemed to be) University, has been granted Category-1 status, accorded with A++ grading earlier by NAAC, by the University Grants Commission (UGC), with a score of 3.57/4 - one of the highest scores for any educational institution in the country. We are chosen as 2nd Top Tech College in India by Dataquest and the prestigious Times higher education has rated KL University as one of the top Universities for the year 2021. Koneru Satyanarayana, We are expanding our footprints across India, and presently at Hyderabad, and we have also set up new courses as well as extended the intake on several of our existing courses. Additionally, with experienced dedicated teachers and excellent infrastructure, we stand on our promise to give students every opportunity for overall development of the mind and body, as well as chart a successful future for them. The following pages of this prospectus will showcase the various aspects of KL, replete with facts and figures with 9 schools offering Undergraduate, Postgraduate & Doctoral programs across Engineering, Life Sciences, Law, Pharmacy, Fine Arts, Management, and Architecture & Design to choose from, I believe we have something for everyone. Our state of the art facilities, international student programs for cultural exchange and focus on the students' overall growth all tie into our underlying goal to create passionate, knowledgeable and humane professionals. Domestic and International students enjoy the privileges of studying at a green campus, with world class amenities and full support of the University for their all-round Development. At KL, we strive to work hard, stay dedicated to our goals and persevere - until we achieve success, and then work harder to achieve our next set of higher goals. I believe the purpose of education is to teach how to think and develop a capacity to reason with facts. Keeping in mind the importance of planning and prioritizing time and its effective use are essential to achieve success. I wish all of you all the best for your future



# THE GENESIS

KL Deemed to be University was established in 1980-81, as KL College of Engineering, which was upgraded to KL College of Engineering Autonomous in 2006 by UGC, and was declared as a Deemed to be University in 2009 by UGC, MHRD Govt. of India. In 2012 as a Deemed to be University the institution was accredited by NAAC with A Grade and later in 2018, was re-accredited by NAAC with A++ grade. In 2019 UGC, MHRD declared this institution as Category I Institution.

HYDERABAD CAMPUS KLH, the Hyderabad campus is currently at Aziz Nagar while an integrated, world class, 90 acre campus, is also currently being built at Bachupally, the education hub of Hyderabad, capital city of the start-up state, Telangana. Designed by Woods Bagot, the campus aims to be a benchmark in global educational institution standards.

KL Deemed to be university was established in 1980-81, as KL College of Engineering, which was upgraded to KL College of Engineering Autonomous in 2006 by UGC and was declared as a Deemed to be University in 2009 by UGC, MHRD Govt. of India. The institute remains indebted to the leadership of our late co-founder Er. Koneru Lakshmaiah and our Founder Er. Koneru Satyanarayana, both of whose vision has helped in creating this abode of learning, which has emerged as one of the elite institutes of the nation.



## CONNECTIVITY

The current KLH campus is near TSPA Junction on Chilkur Road, Hyderabad, very close to the exit 18 on ORR, Gachibowli Junction and the airport (via ORR). Hyderabad, being one of India's metro cities, is well connected to all major cities by road, rail and air. Rajiv Gandhi International Airport makes Hyderabad one of the best connected cities in the world by air.

# LIFE AT KLH

KL STUDENT ORDINATE (KLUSO)-KL Student Ordinate (KLUSO) is an official student body, used as a platform by students to showcase their talent by joining any of the 17 clubs in KLUSO as per their choice. Alongside participating in events of national repute, KLUSO also organizes inter-university and inter-college events and competitions like Nrithya, Kalakaar, Kavishekara, Ethnic Day, Rangoli and Kites Festival. Hobby clubs are for students to pursue their interests in various extracurricular activities like singing, dancing, acting, speaking, painting, fashion designing etc. as part of their academic lives here at KL. Hobby clubs have exclusive trainers along with latest and advanced instruments and facilities and are wholly managed by students. These clubs organize events like a National level Techno management fest - SAMYAK, intra-college Cultural fest - SURABHI, Women's Day Celebrations - FEM FLARE, Republic Day, Independence Day, Department Fests, Awareness Drives, and many more.

- **Prakruthi Club (Nature)**
- **Samskruthi Club (Ethics)**
- **Sodhana Club (Research)**
- **Swara Club (Music)**
- **Vachas Club (Speaking)**
- **Varna Club (Painting)**
- **Vayana Club (Knitting & Embroidery)**
- **Yantrana (Technical)**

## TECHNICAL FESTIVAL

The technical festival and project exhibition is organized in the odd semester (October) every year to promote innovative ideas and technical skills of students. CULTURAL FESTIVAL The cultural festival in the even semester (February) of every year is the best platform for the students for exhibiting their talent and creativity. Through these festivals KL imparts organizational skills, leadership skills, competitive spirit, and team behavior to our students. SPORTS KL Deemed to be University encourages students to explore their talent by providing good sports and games facilities like



## EXPERIENTIAL LEARNING- HEADING

- **Aastha Club (Service)**
- **Aarohana Club (Trekking)**
- **Abhinaya Club (Dramatics)**
- **Chitra & Chalana Chitra Club (Photography & Short film Making)**
- **Lekhana Club (Literary)**
- **Maya Club (Animation)**
- **Narthana Club (Dance)**



**ARCHERY**



**CHESS**



**CRICKET**



**TAEKWONDO**



**TABLE TENNIS**



**BASKETBALL**



# FACILITIES

COACHES WITH INTERNATIONAL STANDARDS, FOR ALL 20 MAJOR SPORTS AND GAMES



GYMNASIUM FOR GIRLS



GYMNASIUM FOR BOYS



MULTIPURPOSE ROOM WITH CHESS, CARROM ETC.



MULTIPURPOSE ROOM WITH TAEKWONDO/WUSHU



HOBBY CENTER



ATHLETIC TRACK



CRICKET FIELD WITH NET PRACTICE



SYNTHETIC BADMINTON COURTS



TENNIS COURTS



THROW BALL COURT



VOLLEYBALL COURTS



INDOOR STADIUM



SYNTHETIC BADMINTON COURTS



YOGA AND MEDITATION CENTER



FOOTBALL FIELD



HANDBALL COURT



HOCKEY FIELD



KABADDI COURTS



KHO KHO COURT



BASKETBALL COURTS

# RESEARCH @ KLH

## RESEARCH FACILITIES

- ◆ At K L, great emphasis is laid on Research and Development (R&D) that is focused on development of product/process oriented technologies for sustainable development.
- ◆ There are 35 faculty research groups, each headed by an eminent professor, actively involved in setting up research centers and mobilizing research grants from funding agencies and consultancy projects from industries.
- ◆ These projects are executed and disseminated to UG, PG & Doctoral students in the form of mini & major projects

# AWARDS AND HONORS



**7 UGC RESEARCH AWARDS (OUT OF 100 GIVEN BY UGC, COUNTRYWIDE)**



**26 SERB YOUNG SCIENTIST PROJECTS.**



**19 DST WOMEN SCIENTISTS.**



**37 ONGOING SPONSORED RESEARCH PROJECTS AND 87 PROJECTS COMPLETED SUCCESSFULLY WORTH SEVERAL CRORES**



# CENTERS OF EXCELLENCE AND RESEARCH LABS



Four Centers of Excellence are established to promote research



Advanced Center for Energy Studies



Advanced Studies in Atmospheric Sciences



Center for Bioprocess Technology



Center for Robotics and Mechatronics



Our Atmospheric Sciences, Computer Science Engineering (CSE) Electronics and Communication Engineering (ECE), Mechanical Engineering (ME), Biotechnology (BT), Electronics and Computer Science Engineering (ECSE) and Physics departments are recognized and funded by the Department of Science and Technology (DST) under 'Fund for Improvement of S&T Infrastructure' (FIST).

# MAJOR R&D HIGHLIGHTS



- KLU allows an internal funding of **INR 5L** per faculty and INR 25,000 per student for every approved project.
- KLU is a Department of Scientific & Industrial Research (DSIR) recognized institute.
- **5000+** research publications in the last 4 years defaulted in reputed databases like Scopus and WoS, among others.
- **55 patents** filed and published.
- Faculty **collaborating** with international universities like NTU, NSU-Singapore, AIT-Thailand, Nagoya University-Japan, Monash University, Victoria University-Australia, Tomsk polytechnic University - Russia.
- Both full time and part time scholars enrolled in research programs for Ph.D. degree are allotted with research guides.
- To our credit, we have **124 research projects** acquired in different areas of Science and Engineering worth **INR 46.5Cr**, sponsored by various funding agencies which include:
  - Department of Science and Technology (**DST**)
  - Department of Biotechnology (**DBT**)
  - All India Council for Technical Education (**AICTE**)
  - University Grants Commission (**UGC**)
  - Indian Council of Medical Research (ICMR)
  - Defense Research Development Organization (DRDO)
  - Ministry of New and Renewable Energy (MNRE)
  - Indian Space Research Organization (**ISRO**)
  - Indian Council of Social Science Research (**ICSSR**)
  - Ministry of Environment, Forestry & Climate Change (**MOEF**)
  - Science & Engineering Research Board (**SERB**)



# ACADEMIA LEARNING



## SELF-LEARNING

Enables students to learn what they want, when & how they want. KL University motivates a student, by maintaining good CGPA; to pursue certain courses through Online based MOOCs platforms by self learning mode.

## BLENDED LEARNING

A style of education in which students learn through MOOCs (self-learning mode) as well as traditional class based learning.

## PROJECT BASED LEARNING

Project based learning takes the dynamic approach of educating students through real world challenges and problems. Projects in such learning, could involve solving an existing problem present in real life, outside the confines of a textbook, or answer questions. This approach truly grooms students for life outside the classroom, and for a world beyond textbooks.

## FLIPPED CLASSROOMS

Flipped classrooms, as part of blended learning, flip the traditional learning environment. The primary source of knowledge on a topic is received from online content or digital sources provided by the teacher, to be looked at outside class hours. The actual learning on the subject happens later in the classroom, when students get together in the class, to discuss, analyze, understand and explore the topic. Flipped classrooms don't just grab students' attention and interest in learning, but also empower them by handing over a guided responsibility of their own learning.



## PEER LEARNING

Peer learning allows students to learn with and from each other as fellow learners. This enables students to learn a great deal by explaining their ideas to others and by participating in activities in which they can learn from their peers. This helps slow learners to learn from fast learners.

## LAB TAKEN TO CLASS

Lab taken to class makes the student to practice hands on every theoretical and fundamental concept soon after the coverage of the same through different tools used in the industry, leading to experiential learning in the classroom itself using NI MyDaq and laptops.



# ENTREPRENEURSHIP AND START-UPS

**CENTER FOR INNOVATION, INCUBATION AND ENTREPRENEURSHIP (CIIE)** was started in 2013 to foster the spirit of Entrepreneurial Thinking, promote & sustain student innovations from ideation to start-up developing entrepreneurial ecosystem in the young minds and shaping next generation entrepreneurs.

## VISION:

Fostering the entrepreneurial culture amidst the students and creating entrepreneurs by continuous mentoring and training.



## MISSION:

To bring a paradigm change in shaping young minds to be job creators from job seekers and thus rejuvenating the economy. KONERU LAKSHMAIAH TECHNOLOGY INCUBATORS FOUNDATION (KLTIF) Koneru Lakshmaiah Technology Incubators Foundation (KLTIF) - the new and separate official entity working on external incubation and funding activities to take and allow the start-ups to apply Govt. of India schemes, other investment sources encouraging student ideations and start-

ups. KLTIF is recognized under Start-up India and DIPP, Ministry of Commerce & Industry, Government of India. The university has been funded INR 10.97 Corers by DST NIDHI to establish a technology business incubator (TBI). Additionally, funding MeITY has also funded under TIDE 2.0 scheme to establish startups. 125+ Start-ups 1000 - 5500 Ideas 5+ Startups with more than 1 Cr revenue generation 5+ IPR's commercialized iPR 50+ Entrepreneurs registered with Ministry of Corporate Affairs and MSME 200+ Employment generation 5-10 Crore Revenue generation

## COLLABORATIONS



- **Confederation of Indian Industry, New Delhi (CII)**
- **Association of Lady Entrepreneurs of Andhra Pradesh (ALEAP)**
- **National Entrepreneurship Network (NEN)**
- **The Indus Entrepreneurs (TiE, Andhra Pradesh)**
- **The Andhra Pradesh State Skill Development Corporation (APSSDC)**
- **AP Chambers of Commerce and Industry Federation (AP Chambers)**
- **Association for Innovation Development of Entrepreneurship in Agriculture a-IDEA NAARM, Hyderabad**
- **Indian Institute of Technology, Kharagpur - Entrepreneurship Cell**
- **Nexus- US based start up hub**
- **Andhra Pradesh Technology Development and Promotion Centre (APDTC)**
- **Indo-Nordiac Innovation Acceleration Clusters (INIAC)**
- **National Entrepreneurship Network (NEN)**

# ACHIEVEMENTS:

- Technology Business Incubator from Department of Science & Technology **(DST-NIDHI) with 10.98 Cr**
- Best International Award for NapLocks start-up by North Eastern University, **USA worth US\$1000**
- Best Women Entrepreneur Award for BYB Start-up by Start-up India AP Yatra worth **INR 55,000**
- Best Innovative Technology Award for GoOffer Hyper Solutions start-up by Start-up India AP Yatra worth **INR 75,000**
- Best Idea Award for Fopple Drones start-up by IB Hubs, Hyderabad worth **INR 1,00,000**
- Top three start-up venture SuBrains by APSSDC i2E worth **INR 15,000**
- Most promising and Innovative Entrepreneurship Center for KLEF by **Praxis Media, New Delhi**

# SKILLING THAT LEADS TO KLH PLACEMENTS

KL University placement department implements the concept of Training has been implemented and proved successful. The Placement Cell is sincerely working to empower students with various qualities and skills to achieve professional and personal excellence. The Training & Placement Cell is playing a major role in transforming the students to the expectations of the industry. All the students are informed about the necessity of maintaining good academic scores and are motivated regularly to achieve the top rankings in the curriculum.



Training programs and industry related seminars are planned regularly and the students are exposed to these kinds of programs from the very first day they step into the college. These programs along with mock tests, have been made mandatory and evaluation procedures are followed which are in line with those required by the corporate world. They are being prepared to be the best individuals with logical and analytical skills and with excellent practical knowledge.





# OBJECTIVE OF THE PLACEMENT PROGRAM:

The main object of placement department is to bridge the gap between the industry and the academia by conducting necessary training sessions

## PRE-PLACEMENT ACTIVITIES

We help students in exploring placement opportunities by inviting various companies for campus placements who are in their 3rd year of program and are likely to graduate.

The final placements are the result of very systematic interactions with the industry and continuous career counseling for the students. Right from the beginning of the program students are continuously counseled with regard to their career aspirations and options which in turn is vigorously followed up with the potential companies for participating in the placement program. This not only helps the students in getting their Super Dream & Dream jobs but also assists the recruiters in identifying the right candidates. Checkout the phase-wise activities below:

### PHASE-A

- Parameters of competency / competency segments.
- Concept of Total personality development.
- Bridging gaps between company industry and academia



### PHASE-B

- Developing verbal & non-verbal communication skills.
- Developing self-esteem & confidence building skills.
- Developing aptitude, analytical, logical skills
- Developing technical skills
- Developing emotional intelligence & interpersonal skills.
- Managerial & leadership skills.

### PHASE-C

- Development of a positive attitude.
- Development of meaningful perceptions.
- Value additions for self & the organizations. Invent your own superlatives.
- Overcoming inferiority & superiority syndromes & hesitant approaches.
- Tips for conducting well in-group interactive sessions.
- Importance of Successful counseling & mentoring for professionals. Motivational & moral Boosting measures

### PHASE-D

- Mock / simulated exercises
- Company specific training
- Online and Offline assessments



# EXTRACURRICULAR ACTIVITIES

KL Deemed to be University off-campus, Hyderabad constitutes hobby clubs established for students to pursue their interests in various extracurricular activities as part and parcel of their academics. The extracurricular activities like singing, dancing, acting, speaking, painting, fashion designing and social/community service

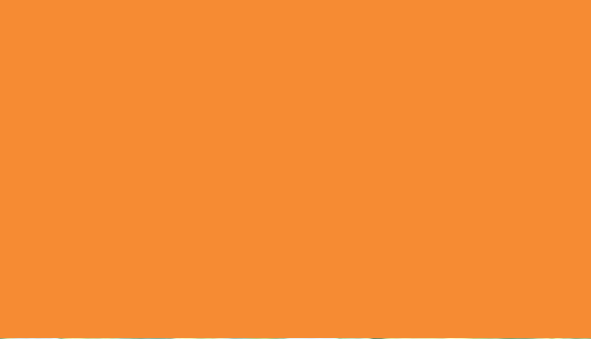
The Hobby Clubs are designed to suit students' timings without hindrance to academic work and also indirectly help them to perform well overall. Students actively participate in different events to develop team spirit and also achieve laurels and prizes for themselves and for the university. Hobby clubs have exclusive trainers along with latest and advanced instruments and facilities. Students also play an active part in the organization of the annual festivals conducted by the university such as SAMYAK and SURABHI.



More than relaxation and recreation it has been observed that students are developing their personalities to perform better during placements and in life in general. Being part of the hobby clubs will also become part of campus life memories even after college.

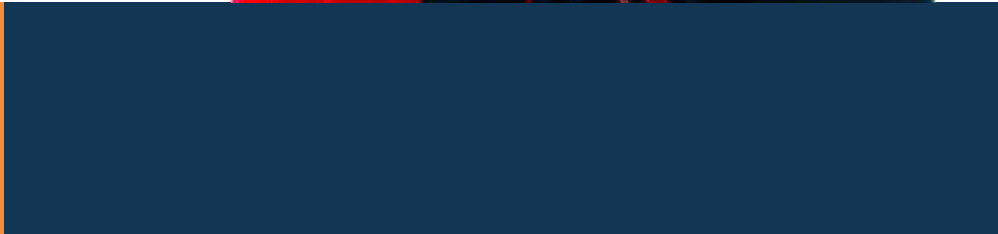






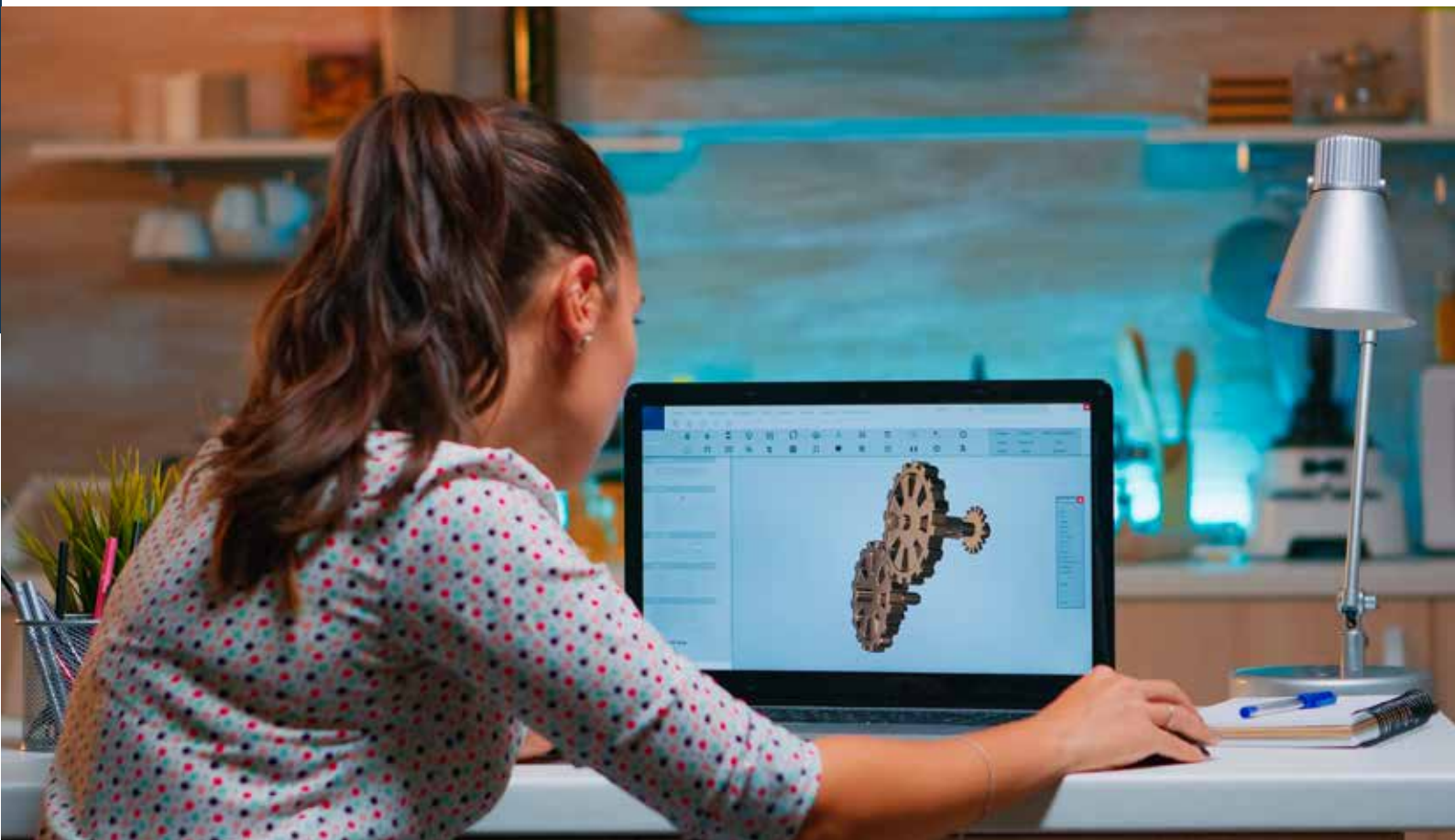
# PROGRAMS OFFERED AT KLH

- ◆ **ENGINEERING**
- ◆ **MANAGEMENT**
- ◆ **COMMERCE**
- ◆ **SCIENCE AND HUMANITIES**





# SCHOOL OF ENGINEERING



**ASPIRE TO BE THE  
NEXT-GEN TECHNOCRAT  
EXPLORE THE DYNAMICS  
OF ENGINEERING**



# B.TECH IN COMPUTER SCIENCE & ENGINEERING

## B.TECH. - CSE DURATION 4 YEARS

### SPECIALIZATIONS

- Artificial Intelligence & Intelligent Process Automation
- Cyber Security & Blockchain Technologies
- Data Science and Big Data Analytics
- Game Development and UX Design
- Internet of Things and Digital Twin
- Software Modeling & Devops
- Cloud and Edge Computing

## B.TECH. - MINOR DEGREE - B.TECH. - HONS.

- Minor Degree in Computing
- Honors Degree in CSE



### PROGRAM

- M.Tech. (Duration 2 Years)

### SPECIALIZATIONS

- Computer Science & Engineering
- Artificial Intelligence & Data Science
- Digital Forensics & Cyber Security

## PROGRAM PH.D (FULL TIME / PART TIME)

### SPECIALIZATIONS

- All the specializations referred above
- Faculty 459
- Ph.D. Holders 246
- Faculty Pursuing Ph.D 173
- Masters 40
- Student Intake
- B Tech 1920
- M Tech 10





# OVERVIEW

- The Department of Computer Science and Engineering offers Undergraduate, Postgraduate, and Doctoral degrees.
- Flexible and Industry Focused Curriculum
- Creative Pedagogy
- Fully Flexible Choice-based Credit System (FF-CBCS),
- Basic Sciences and Engineering Sciences in the First year
- Core Courses in the second year
- Professional Electives in the third year
- Open Electives, Projects, and Internships in the fourth year
- Placement-Related and Competitive Exam-Oriented Training



# RESEARCH

- Computer Networks and security
- Software Engineering
- Knowledge Engineering
- High Performance Computing
- Cloud Computing
- Network Security and Digital forensics
- Soft Computing
- To conduct research in the emerging areas that include:
  - Wireless Sensor Networks
  - Wireless Channel Simulation
  - Wireless Network Resource Optimizers
  - Remote sensors
  - Quantum Key Cryptography
  - Performance analysis of network resources
  - Encryption & Broadcasting
  - Secured systems and attack patterns
  - Multicast data transfer in Mobile networks
  - Cryptography conventions



# HIGHLIGHTS

- **Industry Driven and Flexible curriculum**
- **Eminent Faculty with a rich mix of Academic and Industry Exposure**
- **Trendy Programs with inbuilt Global Certification programs**
- **The State of the Art Laboratories and Infrastructure**



- Adaption of Clean room software engineering to different classes of applications
- Extreme programming
- Aspect oriented programming
- Distributed Data Mining
- Cognitive Data Mining
- Spatial temporal data mining
- Virtual computing



## RESEARCH OUTCOMES TILL 2020

- Indexed Publications 2317 Patents 67
- Books & Book Chapters 129
- Consultancy Amount 148.06 Lakhs
- Internal Funding 394.64 Lakhs
- Seed Money 181.75 Lakhs Funded projects
- Internet of things (IoT) Research Laboratory (Awarded in 2013, INR 45L, for 5 years)
- Rural Women Technology Park in Tadepalle Mandal (Vaddeswaram Village), Guntur District, Andhra Pradesh (Awarded in 2015, INR 86.22 L, for 3 years)
- Development of an expert system for career assessment based on cognitive models (Awarded in 2016, INR 16.87 L, for 3 years)
- An Effective Co-operative MAC Protocol in Multichannel Multi-Radio Environment of Cognitive Wireless Mesh Networks (Awarded in 2016, INR 20.50 L, for 3 years)
- Precision Farming and the Value Addition for Scheduled Caste Population in Piduguralla Mandal, Guntur District, Andhra Pradesh (Awarded in 2020, INR 103.22L, for 3 years)

## INFRASTRUCTURE ACADEMIC LABS

### ACADEMIC LABS

- Operating Systems Design Lab
- Database Management Systems Lab for SQL & NOSQL
- Computer Networks & Security Lab
- Data Science Lab with Python & R
- Data Mining & Warehousing Lab
- Data Analytics & Optimization Lab
- Computational Intelligence Lab
- Enterprise Programming & Web Engineering Lab
- Language Technologies Lab
- Visual Technologies Lab
- Systems Engineering Lab
- High Performance Computing Lab
- Functional & Concurrent Programming Lab
- Cloud & Server less Computing Lab

- Game & XR Development Lab
- UX Design & Interaction Design Lab
- Digital Forensics & Cryptography Lab
- Full Stack Blockchain & Dapps Lab



The Computer center is equipped with Xeon Servers and desktops connected through Ethernet with high speed Internet connectivity. Peripherals like laser printers, scanners, DVD writers, and web cameras are available.



## SCOPE OF EMPLOYMENT

KLDeemedtobeUniversity has meticulously planned to make all its outgoing students employed. The University had installed the infrastructure, employed well experienced faculty, designed and delivered programs that help enhance the communication and soft skills which are required for making the students employable. An excellent system is in place that considers all the issues that make a student employable. The University has been successful for the last 14 years, in employing all the students who have registered and are eligible for placement through its offices located across the country. About 50 trained personnel work extensively to make the students ready for recruitment by the Industry. CSE students have been placed in over 106 companies with around 2100 offers in total ranging from packages 6.5 Lakhs per annum to 25 Lakhs per annum.

## PROGRESSION TO HIGHER STUDIES

**NEARLY 30% OF STUDENTS OPT TO PURSUE THEIR STUDIES FURTHER.**



# B.TECH IN ARTIFICIAL INTELLIGENCE & DATA SCIENCE

**AI & DS**  
**DURATION 4 YEARS**

## SPECIALIZATIONS

- **Autonomous Systems**
- **Perception and language Technologies**
- **Computational Intelligence**
- **Geo-Spatial Data Analytics**
- **IoT Analytics**
- **Medical Intelligence**
  - Faculty with Ph.D. 06
  - Pursuing Ph.D. 04
  - Masters 02
  - Total Faculty 12

## ABOUT THE DEPARTMENT



Established in the year 2020, the department of AI and DS are the youngest departments that have been set up with the goal of training students and conducting research in the fields of Artificial Intelligence & Data Science. The department consists of highly qualified faculty with doctoral degrees from the reputed institutes of India and abroad. The department aims to train the students as leaders in AI & DS with world-class infrastructure, curriculum, and comprehensive hands-on experience through industry connect programs. The ultimate goal is to nurture academic excellence, industry exposure, and outstanding career opportunities for our students. As a specialized branch of global technology, the department has a huge scope of growth with ample opportunities to make a mark in Education both at the National Level and Global level. AI&DS is an area that can be seen not just as an area with Job Potential but also with startup potential. With a blend of TBI, ACIC, and Incubation support we have in our university, we will work to inculcate the startup culture in AI & DS.



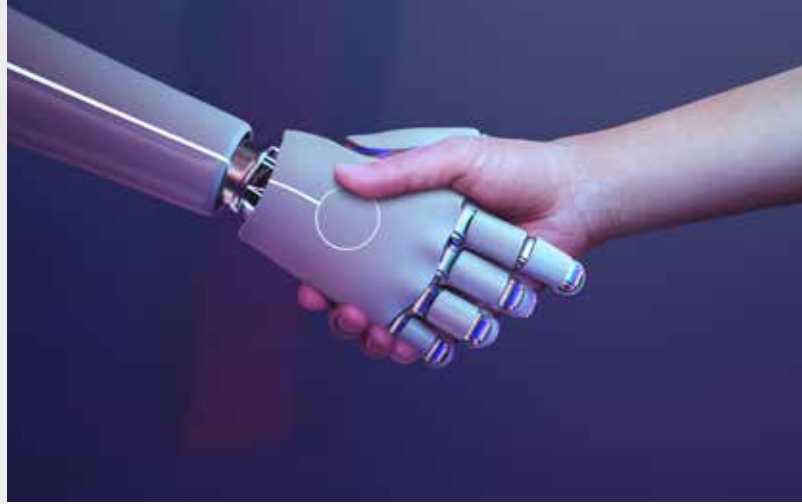
# PROGRAM DETAILS

KL University offers 4 years Bachelor's degree in Artificial Intelligence & Data Science Engineering and our courses are designed in Lecture-Tutorial-Practice-Skill (L-T-P-S) model to provide a comprehensive theoretical, practical, technical, and skill-based learning experience. The Department of Artificial Intelligence & Data Science offers 4 years Bachelor's degree in AI & DS with the following specializations.

- ◆ AUTONOMOUS SYSTEMS
- ◆ DISTRIBUTED LEDGER ANALYTICS
- ◆ GEO-SPATIAL DATA ANALYTICS
- ◆ IOT ANALYTICS
- ◆ MEDICAL INTELLIGENCE
- ◆ SOCIAL & DIGITAL MEDIA ANALYTICS

# CURRICULUM

As a specialized branch of global technology, the B.Tech in AI & DS has a huge scope of growth with ample opportunities to make a mark. The well-researched and carefully crafted course curriculum along with six specializations designed to keep the future of the AI & DS will provide ample opportunities for the students to become masters of the technology.



# SKILL DEVELOPMENT

Apart from the core engineering subjects, a student is also exposed and well versed with the existing tools through the skill part of a course apart from trying to design and implement their own tool. Some of the Tools and frameworks the students will be learning are as follows;



# DESIGN-BASED LEARNING

Learning through Design/Implementation which is the course delivery practice in our university for the majority of the courses which is one of the unique selling points that will make the student competent in getting high-end jobs in the domain.





# START-UP CULTURE

AI&DS is an area that can be seen not just as an area with Job Potential but also with startup potential. With a blend of TBI, ACIC, and Incubation support we have in our university, the students will be encouraged and guided by Industry mentors to inculcate the startup culture in AI & DS.

# CAPSTONE PROJECTS

Capstone projects will help the student to consolidate the concepts learned in multiple subjects for developing a tool in AI & DS. The student will be using all the knowledge and practical exposure to solve a real-world problem by developing his own tool or solution.



# RESEARCH LABS

Artificial Intelligence and Data Science research group in KL is one of the largest groups with over 100 faculties whose expertise is in the field of AI & DS. Academic & Research labs allow the students to explore the theory they learn in the classrooms. They can try, test, and evaluate the formulas, principles, and equations practically and learn to apply them to meet real-time challenges. Our labs are fully equipped to meet

the student's curricular expectations. Find furnished below our academic labs, replicating the state-of-the-art technology and innovation.

- IoT Labs
- Signal Processing Lab (BoT lab)
- Advanced Communication Lab

# FACULTY

The strength of the department of AI & DS lies in a pool of well-qualified and experienced staff. Apart from holding Ph.D. degrees, our staff has rich academic and industry experience. With article publications, patents, and FDP our faculty remain up to date to meet the latest demands and the challenges from the industry to equip our students thoroughly to meet the requirements in the job market. We have 100+ faculty specialized in artificial intelligence



# B.TECH IN ELECTRONICS AND COMMUNICATION ENGINEERING

## PROGRAM B.TECH-ECE DURATION 4 YEARS

### SPECIALIZATIONS

- Artificial Intelligence & Intelligent Process Automation
- Data Science & Big Data Analytics
- Cyber Security & Blockchain Technology
- Game Development & UX Design
- Internet of Things (IoT) by CDAC
- Internet of Things (IoT)
- VLSI
- Robotics and Automation
- Machine Learning & Digital Media Processing
- RF & Microwave
- Data Communications
- Computer Communications & 5G Technology
- Bio-Medical Instrumentation

# PROGRAM

## M.TECH. DURATION 2 YEARS

### SPECIALIZATIONS

- VLSI
- Internet of Things (IoT)
- Robotics and Automation
- Radar & Communications

# PROGRAM

## PH.D. FULL TIME / PART TIME

### SPECIALIZATIONS

- VLSI & Micro Electronics
- Communication & Wireless
- RF & Microwave
- Signal Processing
- Embedded Controllers, IOT & Power Electronics
- Robotics and Automation
- Data Computing

## OVERVIEW

**Established: 1980**

**Accredited: 5 years (2008, NBA) AICTE Approved**

The Department of Electronics and Communications Engineering was established in 1980-81 with an intake of 60 students. The department has been successful in producing excellent and well-trained graduates, wherein currently there are around 3400 students (UG & PG) and faculty members drawn from premium institutes throughout India, with a perfect blend of eminent faculty drawn from academia, industry and research organizations. The programs are designed with the main objective of making students adapt to latest technologies, specializations and be industry ready at the end of their academic journey with KLU.





## HIGHLIGHTS

- **DST FIST** Sponsored Department (Grant received twice).
- Contemporary industry-ready curriculum.
- Lab taken to class.
- **100% Placements** for past 17 years for eligible and registered students.
- **248 Rich academic**, research and industry-experienced faculty
- **50%** of faculty are Doctorates.
- **20+ Faculty** with Govt. of India research awards.
- **3000+ Peer-reviewed** research papers published in Scopus/SCI/WOS/IEEE etc
- **42** Government-sponsored projects.
- **14 Crores** worth of sponsored projects.
- **33 Books** published by faculty.
- **48 Patents** published.
- **08 National** & International granted patents.
- **18 Start-ups** by students.
- **12 MoUs** with industries
- **Hands-on experience** on advanced tools including Xilinx, HFSS, Mentor graphics, NI Labview, Matlab, Vivaldo, Octave, etc.
- **Innovative teaching methodologies:** Lab taken to class and Project based labs
- **Academics include industry** centric competencies with good hands-on skilling Open electives from other branches of Engineering, Management, Fine Arts, and Commerce, etc.
- **Mentor-mentee programs**, where students can mentor with industry experienced skilled persons.

- **Implementing the Self Learning concept.** It is an option for students to get exempted from class attendance where they can pursue their interests during those hours either by working on Elite
- **Coding, Entrepreneurship, Projects,** Research, and Peer Mentoring, etc
- **Design & Build (DB)** technical talks with industry experts.
- Design and Build workshops such as **IoT**
- **Visistatha, Silicon Mantra, Kreativ Ezee** etc.,
- Students become members of Professional Societies such as **IEEE, IET, IETE**, etc.
- International research collaborations with **OSMC Linkoping University**, Sweden, Tyumen Industrial University



## INDUSTRY CONNECTION

- Guest lectures by industry eminent professors and industry experts from National Instruments (NI), C DAC, IRNSS& ISRO, KELTRON, XiLinx, Mentor graphics, effronics, ANSYS etc.,
- Faculty development programs by industry experts
- Internships in industry through practice schools after B. Tech 2nd year and 3rd year.
- Campus placement drives by leading industries.
- Strong Alumni Connect in Top MNCs across the globe by providing internships, Projects, delivering DB talks on Latest technologies

# RESEARCH

## AREAS OF RESEARCH

- VLSI & Micro Electronics
- Communication & Wireless
- RF & Microwave
- Signal Processing
- Embedded Controllers, IoT & Power Electronics
- Robotics and Automation
- Data Computing

## FUNDED PROJECTS

- The Department has 43 sponsored research projects from DST, DLRL, ISRO, DEAL, AICTE and other funding agencies
- Sponsored projects worth of 14 Crores

## PAPER PUBLICATIONS

- The faculties have published 2500+ Publications in SCI and Scopus Indexed Journals & Conferences include IEEE transactions, Elsevier, Springer, Taylor, PIER etc.
- The department also conducts National & International Conferences at regular intervals in association with professional societies like IEEE, etc.



## INFRASTRUCTURE

- Completely ICT enabled classrooms and seminar halls.
- Wi-fi enabled Digital classrooms.
- 15+ well equipped Academic laboratories
- 8 advanced research centres.
- 4 Centre of excellences with Industry collaborations
- 1:4 computer student ratio
- High performance data computing centre



## ACADEMIC LABS

- Electronic Devices Lab
- Analog and Digital communication Lab
- Bio medical Instrumentation Lab
- VLSI Lab
- Embedded and IoT Lab
- Image Processing Lab
- Antenna and Microwave Engineering Lab
- Natural Language Processing Lab
- Data Computing Lab
- Data Networks and Protocols Lab
- Electronic System Design Lab

## RESEARCH CENTRES

- The department has well established research centres
- Space Technology and Atmosphere Sciences (STAR)
- Infrared Image Centre (IIC)
- Applied Signal Processing Research Centre (ASPRC)



- Bio-Mechanics and Vision computing Research Centre (BVCRC)
- MEMS Research Centre
- Centre for applied research in Electromagnetics (CARE)
- Antenna and Liquid crystal Research Centre (ALRC)
- Research Activity Centre

## CENTRES OF EXCELLENCE

- COEs with Industry Collaboration
- RF & Microwave
- NI LabView
- CDAC
- Tessolve Semiconductor

## FAB LAB

To enable the creative minds to work and realise their ideas, FAB lab is established in academic year 2020-21. Various prototypes leading to edge technology products are being developed in this fab lab by students, faculty, and researchers. This FAB lab is available for anyone to work anytime.

## PROGRESSION TO HIGHER STUDIES

Nearly 30% of the graduating students move onto pursuing M. Tech / MS programs offered by Indian/ foreign Universities & Institutions.

## VAST SCOPE OF EMPLOYMENT

- Students pursuing ECE have a lot of scope in varied industries.
- Students of ECE have the option for both the core as well as software jobs giving them a dual advantage over any other Engineering graduate.
- Students are trained for placements starting from 3rd semester and an intensive state of art training for placements is given by the end of 6th semester which results in 100%



placements for all the eligible students.

- The curriculum of core courses and the associated soft skills courses make the students employable across public and private companies in Electronics and communication sectors, R&D Organizations and other IT based organizations.
- Global certifications that result in employment on latest technologies namely Huawei, Tessolve, National Instruments, Service now, Pega Systems, Automation Anywhere, UiPath and Wipro Talent Next are made as part of training programme for Placements.
- Internships are being offered by ISRO, CSIO (CSIR), DRDO, Synopsys, Analog Devices, Tessolve and many core companies, every year which are leading to promising careers.
- Leading core and software companies like AMD, Synopsys, Analog Devices, Tessolve, Telaverge, ByteXI, Infor, PWC, Amphenol Antennas, BSNL, MTNL, Reliance Communications, Tata Telecom, Hutch, Bharti Telecom, Nokia, CISCO, IBM, Intel, Agilent, Alcatel, AT & T Ericsson, Honeywell, Bosch, National Instruments, Texas Instruments, Accenture, ADP Ltd, Amazon, Deloitte, Earnst & Young, FSS, Hyundai Mobis, IBM, Medha Servo Drive, Mphasis, Pega Systems, ZOHO, EUnimart, HCL, TCS, Infosys, CTS and many more are our proud partners which help in achieving 100% placements for all the eligible students.

# SCHOOL OF BUSINESS



LEARN THE FINEST NUANCES OF  
**BUSINESS MANAGEMENT**  
FROM OUR VISIONARY  
THOUGHT LEADERS



# MASTER OF BUSINESS ADMINISTRATION

# BACHELORS OF BUSINESS ADMINISTRATION

## PROGRAMS MBA

DURATION 2 YEARS

### SPECIALIZATIONS

- **MBA Multi Specialization**
  - Finance
  - Marketing
  - HRM
  - Supply Chain Management
  - Business Analytics
  - Digital Marketing
- **MBA Data Science**
- **MBA Innovation Entrepreneurship and venture Development**

## BBA

DURATION 3 YEARS

### BBA MULTI SPECIALIZATION

- Finance
- Marketing
- HRM
- Logistics & Supply Chain Management
- Digital Marketing
- ERP
- BBA Business Analytics
- BBA with ACCA
- BBA with CMA
- BBA with Enrolled Agent

## PH.D.

FULL TIME / PART TIME

### SPECIALIZATIONS

- Management and Allied Disciplines
- Faculty Profile

• Faculty	157
• Ph.D.	104
• Faculty pursuing Ph.D.	53

### STUDENT INTAKE

- **BBA 420**
- **MBA 300**





# OVERVIEW

**Established: 2006**

Over the past decade, Management education across the globe has evolved by sustaining and adapting the changes driving the competitive economic environment. Over 40 years KL Business School (KLBS) has emerged as a leader in the Management education under the widespread wings of invincible history in developing outstanding individual business leaders. The Programmes offered by KL Business School empower students to deal with the challenges of today's Global Business environment.



At KL Business School, a variety of learning methods include Harvard case methodology, operational workouts, simulations, role-plays and live projects etc. All academic programs are studied with the Industry designed & delivered certifications such as SAP as a part of the curriculum. Support from the leadership coaches, academic & career advisors from the Industry makes this program more vibrant, and Industry preferred

# HALLMARKS

- SAP Certification (SD, FICO, HRMS, MM)
- Summer Internship Program in MNCs
- Management Research Project

- Harvard Case Methodology
- Dedicated Labs for SPSS and R
- Sectoral Electives (Banking, Retail, Healthcare, IT, ITES, Insurance, Foreign Trade, etc.)
- Professional Society Activities
- Skill Certifications in Functional Domains
- Centre for Executive Education
- Centre for Data Analytics
- Centre of Excellence in Leadership Development
- Assistance for Start-ups through Centre for Innovation Incubation and Entrepreneurship

# RESEARCH AREAS OF RESEARCH



HR



FINANCE



ECONOMICS



MARKETING



COMMERCE



OPERATIONS



BUSINESS ANALYTICS



## FUNDED RESEARCH PROJECTS

Faculty & students carrying research projects for reputed organizations including DST, ICSSR, AICTE, UGC and NCW

## PAPER PUBLICATIONS

The Department publishes key findings of students' research in reputed Research Journals. Faculty has published over 1000 research papers in reputed indexed journals.



## INFRASTRUCTURE

- Well-equipped classrooms with latest configured ICT tools
- Computer labs with SPSS 23.0 & R
- Case Study Lab
- Library with latest Textbooks, Research Journals, Magazines and Management books of several genres.
- EBSCO HOST Research Databases
- EBSCO Discovery Services
- Science Direct
- CMIE database
- Prowess Database

## PROGRESSION AND PLACEMENT

Students are placed in corporate careers with best in class CTC with a consistent 100% placement record. Few chose to become entrepreneurs venturing into diverse businesses with support from Innovation and Incubation Centre and Industry Connect.



## INDUSTRIES HIRING

Students are placed across different industries such as Retail, Banking, Manufacturing, IT, ITES, Healthcare, Foreign Trade, Logistics, NBFC, Infrastructure, etc.





# COLLEGE OF COMMERCE



**CHALLENGING  
CONVENTIONS  
BEYOND  
POSSIBILITIES**





# PROGRAMS

# B.COM. (HONS)

## DURATION 3 YEARS

### SPECIALIZATIONS

- ACCA

### OVERVIEW

**Established: 2010**

Accredited: 11years

In line with corporate requirements, the department of commerce offers a unique 3-year undergraduate full-time B.Com program with Honors. Our curriculum includes cutting-edge concepts with real-world applications. The emphasis of the program is to nurture students into competitive commerce professionals and also impart specialized skill-sets in the areas of finance, accounting, and taxation. This program envisages effective teaching using innovative teaching and learning methods such as live projects, classroom discussions, practical training through summer internships and fieldwork. B.Com (Computers) is the application of the software that is designed to help the user to perform specific tasks. The Course aims at producing qualified and trained personnel for fields such as banking, insurance, accounting, stock markets, e-commerce, and marketing. In the present scenario, computer accounting is required in all fields of industries.

### HIGHLIGHTS:

**Association of Chartered Certified Accountants (ACCA)** ACCA is the global body for professional accountants. ACCA supports 200,000 members and 486,000 students in 180 countries, helping them to develop successful careers in accounting and business, with the skills required by employers. ACCA works through a network of 101 offices and centers and more than 7,200 approved employers worldwide.

#### Global Chartered Accounting Program

- Accepted in 183 Countries including India
- 6 paper Exemption out of 13 Paper of ACCA with B.Com (Hons)
- 8 paper Exemption out of 13 Paper of ACCA with M. Sc. (F&C)
- Global Placement in Fortune 500 Companies

### CHARTERED INSTITUTE OF MANAGEMENT ACCOUNTANTS (CIMA)

CIMA is the world's largest professional body of management accountants offering the most relevant accounting qualification for a business career. If you are considering a career in business and finance, the CIMA qualification will open doors with employers all over the world. As a CIMA management accountant, you'll earn more and go further.



### HIGHLIGHTS:

- Global management Accounting Program
- Accepted in 177 countries
- Global quality standard for Management Accounting
- Global placement opportunities
- INR 5-8L package per annum.



## CERTIFIED PUBLIC ACCOUNTANTS (CPA)

A Certified Public Accountant (CPA) is the highest standard of competence in the field of Accountancy across the globe. The exam is administered by the American Institute of Certified Public Accountants (AICPA), which is the world's largest accounting body. To validate the stand of the future requirements of the students to meet the challenges of global scenario, the Department of Commerce KLEF associate with CPA

- Global Accounting Program
- Accepted all over the world
- INR 5-8L package per annum.

## US CERTIFIED MANAGEMENT ACCOUNTANT (US CMA)

The Certified Management Accountant (CMA) is the highest level of certification in Management accounting awarded by the Institute of Management Accountants (IMA), USA. The US CMA Course is a globally recognized, advanced-level credential appropriate for accountants and financial professionals in the business. WHY CMA? For more than 40 years, the CMA® (Certified Management Accountant) certification has been the global benchmark for management accountants and financial professionals. Why? Because CMAs can explain the “why” behind numbers, not just the “what.” And that can give you greater credibility, higher earning potential, and ultimately a seat at the leadership table.

### SALIENT FEATURES:

- Global acceptance
- 50% Pass Percentage
- Two parts covering 11 competencies only
- Global Placement in Fortune 500 Companies firms, US-based firms, and organizations Multinational firms, financial services firms or consultancy
- Minimum CTC of INR 7 Lakhs to 12 Lakhs per annum

## ENROLLED AGENTS (EA - US)

Enrolled Agents (EAs) are federally licensed tax practitioners who may represent taxpayers before the IRS when it comes to collections, audits, and appeals. As authorized by the Department of Treasury's Circular 230 regulations, EAs are granted unlimited practice rights to represent taxpayers before the IRS and are authorized to advise, represent, and prepare tax returns for individuals, partnerships, corporations, estates, trusts, and any entities with tax-reporting requirements. Enrolled agents are the only federally licensed tax practitioners who specialize in taxation and have unlimited rights to represent taxpayers before the IRS. An Enrolled Agent Course is highly valued in the industry as it is backed by the IRS (Internal Revenue Service). Furthermore; an Enrolled Agent's salary is, on average, nearly 17% higher compared with non-qualified preparers.



### SALIENT FEATURE OF EA

- Become a Global tax professional with 3 Papers
  - 6 months to 1 1/2 year course duration
  - Multiple choice question exam pattern
  - 69% of students pass every year
  - Highest tax qualification by IRS, US3 High career opportunities
  - Starting salary range from 5 Lakhs to 6 Lakhs
- RESEARCH Areas of research Commerce, Accounting & Finance Paper Publications  
Our faculty and students published more than 150 papers in national and International Journals.

# JOB OPPORTUNITIES FOR COMMERCE STUDENTS

- Chief Finance Office
- Finance Manager
- Finance Director
- Forensic Accountant
- Compliance/Governance Officer
- Partner Group
- Risk Manager
- Treasurer
- Credit Controller
- Fund Manager
- General Ledger
- PayRoll
- Fixed Assets
- General Ledger
- Accounts Payable
- Accounts Receivable
- Internal Auditor
- Business Analyst and Advisor
- Financial Analyst and Advisor



## PROGRESSION TO HIGHER STUDIES

Undergraduate Program - MSc (Finance & Control), CA, CS and CMA professional courses, MS programs in Finance at Abroad ACCA, CIMA, CPA, and CMA and MBA Post-graduation program-PhD in Banking and Finance, ACCA, CIMA, CPA, and CMA

## SCOPE OF EMPLOYMENT

This course and the associated soft skills courses make the students employable across public and private companies in India and abroad: The students who pursue B.Com (Hons), B.Com (Hons) ACCA, B.Com (Hons) CMA, B.Com (Computers) EA, B.Com (Hons) with CPA, MSc. (Finance & Control), MSc. (Finance & Control) ACCA, Diploma in GBS and MSc (Finance & Control) with Diploma in IFRS can have placement opportunities with 7291 approved employers around the world with 100% placement assistance. Our major global recruiters are BigFour i.e. Deloitte, Price Waterhouse Cooper (PWC), KPMG, Ernst, and Young (EY), and Fortune 500 Companies.



## INFRASTRUCTURE

- Innovative classrooms
- Central Library
- Departmental library
- World-class Hostel facilities
- Internet with Wi-Fi
- E-learning platforms
- Sports complex
- Cafeterias





# COLLEGE OF SCIENCE & HUMANITIES



INDUSTRY-RELEVANT SKILLS  
**AGILE THINKING**  
REWARDING CAREER



# BCA

## BACHELORS OF COMPUTER APPLICATION

### PROGRAM

#### BCA

DURATION 3 YEARS

#### SPECIALIZATIONS

- **Cloud Technology and Information Security**
- **Data Science**
- **Artificial Intelligence**

#### FACULTY

- **Faculty 21**
- **Ph.D. Holders 10**
- **Faculty pursuing Ph.D. 09**
- **Masters 02**
- **Student Intake 240**

#### PROGRAM DETAILS

With its ideal computing lab facilities to train students at different levels in the field of computer applications, the Computer Applications program offers new age specializations in fast-growing streams of the industry, with state-of-the-art facilities and a new-age curriculum.

The department's areas of research include Cloud Computing, IoT, Deep Learning, Data Science, and Wireless Networks. The faculty has published 25 Publications in Indexed Journals & Conferences and regularly conducts National & International Conferences with professional societies like IEEE etc. The department also has industry-collaborative labs with

organizations like CISCO, IBM, Microsoft, Oracle, and Amazon, a state-of-the-art data center with advanced servers that provides a highly interactive learning environment with full-fledged hardware and software training facilities and support of the CRASA team for personality development.

Students from this course can choose to work in the specialized fields of Cloud Computing, Cyber Security, Data Science, IoT, and IPA alongside other IT/ITES companies.



#### INFRASTRUCTURE

The department has adequate ICT (Information communication technologies) enabled classrooms which caters for different modes of teaching including Audio, and Video conferencing and class room connect.

#### ACADEMIC LABS

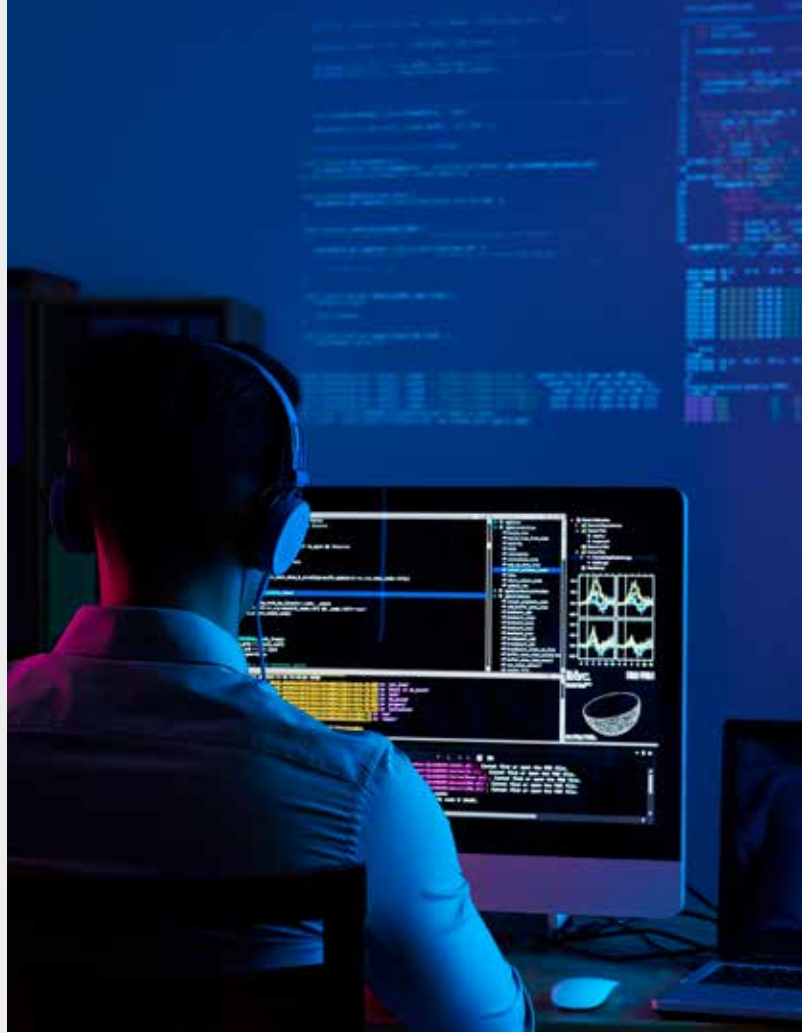
The Department has established labs with latest high end hardware and software for making students practice theoretical concepts. The students practice in the labs through the execution of real life projects which are society focused.



# OVERVIEW

This program is designed with the main objective of imparting a strong theoretical foundation, and to provide exposure to latest technologies to bridge the industry gap in the IT sector by abiding to social ethics. **HIGHLIGHTS**

- This department consists of well expertise and International Certified faculty to teach specialized courses.
- The curriculum includes different emerging Technologies like Amazon Web Services, Sales Force Services, Windows AZURE, Ethical Hacking, Cyber Security, Digital Forensics, and Hadoop.
- The students will be certified by CISCO, Oracle, Microsoft, IBM, Sales force.
- Availability of a super computer that enables parallel computing through virtual cloud.



- Availability of infrastructure and expertise for development of mobile applications.
- Availability of ambiance for incubating the innovative ideas through incubation center.
- The students will acquire sound practical command in their specialization as they undergo 6 weeks of Industrial training (Internship) and 1 semester of project work with regular reviews.
- The students will be groomed by providing intensive
- Placement classes to achieve 100% placements in their specialization.





# CLOUD TECHNOLOGY & INFORMATION SECURITY

Specialization in Cloud Technology & Information Security provides dual career options for the students in the fast growing technology sectors of Cloud Technology and Information Security. Cloud computing is the delivery of computing services like servers, storage, databases, networking, software, analytics and more over the Internet, “The Cloud”. Information Security is the area of study involving technologies, processes, frameworks, conceptual models and practices designed to protect data, communication, devices (computers, phones, sensors etc), programs and applications from attack, damage or threats.



# ARTIFICIAL INTELLIGENCE

Artificial Intelligence is one of the best Master Courses in India. With about US \$50 billion spent over it. AI and Related Academic programs are prospering everywhere. The present state sees a scarcity of skilled employee base in this area. Artificial Intelligence shines out as one of the best UGC approved course across India



# DATA SCIENCE

Specialization in Data Science is specifically designed to prepare students with strong Conceptual foundations as well as practical skills on data science & big data analytics. The Data Science sector is growing exponentially due to enhancements in digital technology. Today, companies are demanding real-time data based solutions for analyzing factors influencing the business like daily activities of customers, business processes, and usage of every resource of the organization, in order to detect and reduce the chances of failure, optimize operations and enhance customer experience. These solutions are gaining traction in various domains such as finance, energy and utilities, education, healthcare, manufacturing, media and entertainment, retail, telecom, IT and many more. Data Science in India is one of the hottest fields in information technology and India faces a severe dearth of data science professionals to meet the current demand.

# ADVANCED LABORATORIES WITH INDUSTRY COLLABORATION

 **MICROSOFT INNOVATION CENTER**

 **SALES FORCE**

 **IBM CENTER OF EXCELLENCE**

 **CISCO NETWORKING ACADEMY**

 **ORACLE CENTER**

 **ESF LABS**


## FOCUSED AREAS OF RESEARCH & RESEARCH CENTERS

 **ARTIFICIAL INTELLIGENCE AND MACHINE**

 **LEARNING**

 **CLOUD COMPUTING**

 **BIG DATA ANALYTICS**

 **CYBER SECURITY**

 **INTERNET OF THING**

## DEPARTMENT OF INTERNATIONAL RELATIONS GLOBAL OUTREACH

In its pursuit for achieving World Class University standards, KLH ( Deemed to be University) endeavors to ascertain, adapt and put into effect apply the best academic and administrative practices .It has signed more than 170 MOUs with Foreign Universities for students and faculty exchange Programs to conduct Collaborative research and publications, programmes, organize joint seminars and conferences etc.



Regular exchanges of students under various schemes like dual degrees, twinning arrangements are arranged with about 15 active Universities in the U.S.A, UK, Europe, Korea and Australia. Every year about 200 students are exchanged for study periods extending from a few weeks to 2 semesters between KLH University and the partner Universities abroad. KLH University is the only University adopted by the 25 member Universities Study Abroad Consortium (USAC) of U.S.A for hosting short-term U.S students in India. For this purpose KLH University maintains specialized units with qualified staff to run these exchange programmes.

Besides hosting exchange students for short periods, KLH University admits around 250 foreign students every year to its regular







programmes .At present, about 600 foreign students from more than 55 Asian, African, European and North American countries are on the regular rolls of the University.

The International Office of the University has, over the years, evolved an elaborate system to make admissions easier. A student from abroad has the facility to apply online through the University website and selection interviews are conducted over telephone / Skype and thereafter-provisional admission letters and visa instructions are sent to the student without the hustle of traveling. Annual subscriptions are taken for two International internet magazines viz Daijiworld.com (Dubai) and Masterstudies.com (Norway) as a means of informing international students about the University.

Concessional tuition fees are offered for the nationals of SAARC and African countries to encourage education with KLH (Deemed to be University) .A 3 month intensive English Language Course is organized every year in the months of March to May (before the commencement of regular courses) for students coming from non English Learning backgrounds to equip them with our teaching

methodology. The International Office makes arrangements to receive and accommodate the new admitted foreign students and also assists with registration with the local Foreigners Regional Registration office.

KLH (Deemed to be University) strives to integrate the diverse international student community with the mainstream KLH University campus culture by organizing annual welcome get together and exclusive orientation programmes. Special medical attention is also provided through the medical



staff. The International office acts as a mentor by monitoring the academic progress of the International students with the help of teachers and counselors. It also encourages and applauds merit students by giving awards and prizes for securing distinctions in semester examinations, part scholarships/fee concessions for higher studies, etc.



As a policy, foreign students are encouraged to opt for higher studies at our University and remain in touch with the International office even after completion of their studies. Graduates are encouraged to join the Alumni Association units in their respective countries Informal KLH University Alumni Association units are being formed in countries like the USA, UK, Thailand, Nepal, Maldives, and South Korea.



# CENTERS OF EXCELLENCE

The Central Advanced Research Center has been established in a huge area with sophisticated equipment for advanced research.

KLH has set up an Innovation and **Entrepreneurship Cell** to provide technical knowledge and facilities for techniques. It fosters entrepreneurship amongst students and assists budding entrepreneurs by providing them with necessary resources.

with multiple ISPs - E-Learning facility in every Class Room - 4300+ Computing Terminals - HPC Infrastructure (Supercomputer) - 5.3 Teraflops (CPU + GPU) - Master Node - HP DL 380P 1\* DL380p Gen8 (2 \* 2.6Ghz, 64GB RAM, 2x2TB HD, 10G IB HCA) - Core Switch: HP 12508 (1250x G2 Fabric Module, HP 1250x G2 Fabric Module, HP



- Application Servers: 8\* BL460c Gen8 Servers (BL460c Gen8, 2\*E5-2665 8 Core, 128GB (16\* 8GB) Memory, 2\*300GB 15K RPM SAS drives, 1\* HP Flex Fabric 10 GB 2-port 554FLB FIO Adapter)
- Storage: As -CX 300 EMC2 SAN Storage 3.0 Tera Bytes
- Apple SAS Storage 1.5 Terabytes
- AS-PV110T (LTO-3) Dell Power Value 110 T (LTO-3) Tape Drive
- Internal 3.5 in. SATA disk drives 500 GB, RAID 0/1.
- Sun Servers • Dell Power Edge • Apple server X serve

## COMPUTING FACILITIES

Data Center: A state-of-the-art data centre with advanced servers provides a highly interactive learning environment with full-fledged hardware and software training facilities.

- Completely 802.11n enabled smart campus with 10 Gbps Internet bandwidth
- Totally Wi-Fi enabled Campus with high speed fibre optic backbone, enabling: - 24x7 10 Gbps Internet connectivity through firewall



# LIBRARY

The Central Library of KL (Deemed to be) University began as the college library of Koneru Lakshmaiah College of Engineering (KLCE) established in 1980-81. This central library building, constructed as a Green Building with natural sunlight inside the library, currently holds over 190,075 documents and 15 online databases. The centrally air-conditioned library provides a comfortable experience for reading and learning. KLU-Central library is fully automated using Koha open source software and RFID technology. One can access the subscribed e-resources from using the KLEF e-library mobile app



# UNIVERSITY INFRASTRUCTURE

**300 smart classrooms, 74 academic laboratories, 25 research laboratories and 6 industry collaboration labs**



- **10 Gbps** High-speed internet connectivity 24/7 across the campus & hostels
- International standard infrastructure for **indoor/ outdoor games** & sports
- Complete communication setup with a **PCO/STD/ ISD, Fax & Post Office**
- **On-campus Guesthouse**, Post Office, 8 cafeterias, Medical, super Bazar, stationary, multi-level car/ bike parking, Banking/ATM facilities
- KL Campus got the One District One **Green Champion Award** announced by the Mahatma Gandhi National Council of Rural Education implementing the Swachhta Action Plan 2020-2021 in Guntur District from the Department of Higher Education, Ministry of Education, and Government of India.
- **“Most Clean Campus in South Central Region”**, by All India Council for Technical Education (AICTE) - Clean Campus Awards 2017.



# ACADEMICS AT KLH

## FLUID LEARNING THROUGH FULLY FLEXIBLE CHOICE-BASED CREDIT SYSTEM (FFCBCS)

The Fluid learning model enables students to build their degree based on their passion through a variety of courses that contribute to their career track. Students are free to schedule their timetable by selecting courses along with the teachers as per their interests.

## OUTCOME-BASED EDUCATION (OBE)

KL University implements outcome-based education (OBE) -a learner-centric instruction model that focuses on measuring student performance through learning outcomes. In the OBE model, the required knowledge and skill sets for a particular program is predetermined and the students are evaluated on all the required parameters (outcomes) during the progression of the program.



- **All India 2nd Rank among** Technical Institutions by Ministry of Human Resource Development (MHRD)-Swachhta Institute Rankings -2017.
- **Open Air Theatre**, with a seating capacity of **4500** to conduct cultural activities throughout the year
- **Separate 25 Seminar Halls** for staff and students with all the facilities having a total capacity of 5650 for conducting various technical events.
- R&D Theater has a capacity of **1000 and Video Conferencing facilities** for the students and is also utilized simultaneously for addressing seminars and conferences. The centrally air-conditioned hall has a Wi-Fi projection screen, True Cinema with Dolby Digital THX Surround Sound. The hall is fully equipped with State-of-the-art audio-visual devices providing services such as video conferencing, a sound system, and audio-visual material.
- KL (Deemed to be) University is situated in a spacious **100-acre campus**, with a built-up area of over **20,00,000 Sq Ft.**
- **98096.57 Square meters** of greenery area with **4000+ varieties of plants** on the campus.
- The average ratio of students to computers is **3.5 to 1.**
- **Plastic-free campus** - No plastic usage on campus, KLEF has a unique spread and influence to educate the students, staff, and faculty on the need for avoiding the usage of plastics.





# BLEND LEARNING MODEL

Blended Learning Model takes the student learning experience to both physical and virtual worlds. This greatly helps the teacher to track the learner's progress and guide them appropriately.

## DEGREE WITH SPECIALIZATION

Every program offered at KL University has a variety of specializations that the students can choose from. These specializations are in the emerging areas that give hands-on experience to the students and make them industry-ready.



## HONORS / MINOR DEGREE

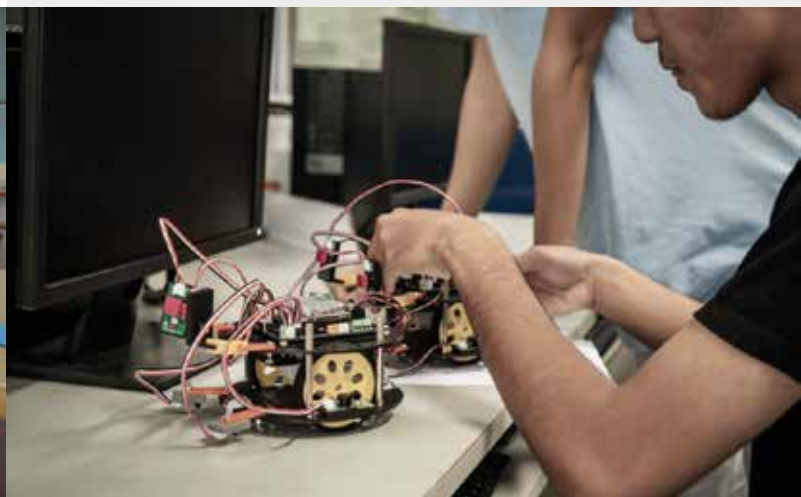
Students maintaining good CGPA can register for more courses than normally prescribed by the university during the regular semester by overloading themselves to earn a minor degree or Honors degree. A student can pursue a minor degree in a discipline other than his regular discipline by pursuing five additional courses from another discipline along with a regular program. Ex. B.Tech Mechanical Engineering with specialization in Mechatronics and Robotics or MBA with marketing and HRM or finance or Technology Management

## SUPPORT FOR VARIOUS CAREER TRACKS VIZ. EMPLOYABILITY/ENTREPRENEURSHIP/ CAREER ADVANCEMENT

Identifying the career tracks of interest like employability, entrepreneurship and career advancement of students at an early stage enables them to progress well in the chosen track.

## PROJECT-BASED LEARNING

Project-based learning takes the dynamic approach of educating students through real-world challenges and problems. Projects in such learning could involve solving an existing problem present in real life, outside the confines of a textbook, or answer questions. This approach truly grooms students for life outside the classroom, and a world beyond textbooks



## SEMESTER ABROAD PROGRAM / DUAL DEGREE

SAP allows the students to get international exposure by doing their projects abroad in their respective specializations. Students can also enroll for the Dual degree program and complete one year of study in the partner university abroad and get one degree from KL University and one more from the university partner.

## INTERNATIONAL DOMAIN SPECIALIZED CERTIFICATIONS

To overcome the gaps in the skill sets expected by the industry, students are motivated to take up training on emerging technologies or trends and go for international certifications. This adds value to the student's profile by benchmarking themselves to industry standards

## MULTIPLE INTERNSHIP MODEL

Internships provide a great opportunity for the students to work on real-time projects. The Multiple Internship model gives the internship experience at regular intervals as an application of their learning.



## DEDICATED CAREER, ACADEMIC AND PERSONAL COUNSELING CELL

The Academic Counseling cell gives necessary guidance to students in choosing the right set of courses that can help them to build their degree appropriate to their chosen career category. Personal counseling cell helps in

dealing with the problems related to their psychological issues and motivates the students to give their best. Career counseling Cell guides the students to choose the right career track, viz. Employability/entrepreneurship/career advancement and guides them in acquiring the necessary skill sets for the same.

## STUDENT ACTIVITY CENTER LEARNING MODEL FOR INFORMAL LEARNING

Student Activity Center (SAC) as a learning model enables the students to learn while solving an identified problem. Rather than learning something and then starting looking out for the problem to be addressed, this model enables the students to learn whatever is needed towards addressing a specific problem. The SAC learning model paves the way for an interdisciplinary approach in bringing the students together and learning by solving the problem. CREDIT TRANSFER Credit transfer from another University is permitted for undergraduate programs; however, a student has to spend at least 50 percent of the minimum course duration at KL University





# FACULTY-OUR STRENGTH (HYDERABAD CAMPUS)

- **1250+ Elite Faculty** of which 650+ are Doctoral Faculty.
- 60% Doctoral Faculty in varied research Domains.
- **27 Faculty** with Govt. of India research awards.
- **12000+ Paper Publication** in SCI/ SCOPUS indexed Journals.
- **Awards from international book of records, Asia book of records and India book of records** for research of faculty and students.



## INDUSTRY RELATIONS

In its quest for building future-ready leaders, the university envisions better industrial relations as a stepping stone to widespread success for the students as well as the university itself. To further this cause, the Industry Relations department, alongside its operations in Vijayawada, also has set up additional Extension Cells at Hyderabad, Chennai, Bangalore, New Delhi, and Pune, with teams that have industrial and corporate experience.

The university is also a member of the Confederation of Indian Industry (CII) and The Associated Chambers of Commerce and Industry of India (ASSOCHAM).

The university has initiated to impart innovative certification programs viz., PEGA, Service Now, CTS Sales Force, WTN-Java, RPA, etc. in addition to regular B.Tech courses, which are

the first of their kind in India. This certification training helped a lot in the placements of students in various companies. Following was the number of students certified in these training programs and placed.

**The Industry relations department caters to the following needs of all departments, across:**

-  **INDUSTRY PARTICIPATION IN CURRICULUM PLANNING**
-  **CONTINUING EDUCATION AND INTERNSHIP FOR FACULTY**
-  **INDUSTRIAL TRAINING AND TOURS FOR STUDENTS**
-  **CONSULTANCY PROJECTS**
-  **COLLABORATIVE PROGRAMS WITH INDUSTRY**
-  **GUEST LECTURES**
-  **EXTENSION LECTURES**
-  **PLACEMENTS**
-  **STUDENT COUNSELING & GUIDANCE**
-  **STUDENT CAREER DEVELOPMENT**
-  **ENTREPRENEURSHIP DEVELOPMENT PROGRAM**
-  **TRAINING PROGRAMS**
-  **ALUMNI INTERACTION**

Through internship-cum-placement concept, another innovative style of placing students, University sent B.Tech. & M.Tech students to various reputed companies like Amazon, Informatica, AMD, Synopsis, Technovart, Kony, Value Labs, John Deere, CEAT, and Amar Raja etc





# PLACEMENTS

- **100% Placements** (For all registered & eligible students)
- Impeccable placement Track Record **Since 2005**
- Opportunities with Super Dream Companies with Salaries around **25 Lakhs**
- Opportunities with Dream Companies with Salaries **around 10 Lakhs**
- Average Pay Package **5.12 Lakhs**
- Proudly announcing **3700+ Placement offers**
- **1000+ Industry** connects across the Globe



## INTERNATIONAL RELATIONS

Internationalization is one of the focal programs at KL & an integral part of enhancing better academic standards and understanding of cross-cultural insights across the globe. This has been paved through admitting international students, collaborations with universities & world class excellence centers. KL has been making long strides to explore the academic horizons by joining hands with likeminded universities across the globe. In this connection KL has signed a very good number of Memorandums of Understanding with well-known universities abroad. With

these Memorandums, the students of KL will derive many benefits such as spending short duration internships abroad, semester abroad, participation in twinning programs with partner Institutions, to acquire Double Degrees, and join for Ph.D programs at those Universities. It provides an opportunity for KL faculty to explore through joining hands with world renowned expertise in academic stature through joint research publications and conduct of international workshops and conferences. KL, has signed MoUs with a number of Universities in the USA, UK, Australia, Romania, Sweden, Malaysia, China, Poland and Ireland promoting academic programs with them, which enable the students to take-up part of their study in those Universities. KL offers semester abroad, internship abroad, 2+2, 3+1 and 3+1+1 programs in association with Partner University

## SEMESTER ABROAD

This provides an opportunity for students to get international exposure. Students can choose to study a few subjects under the Credit Transfer system in partnering Universities abroad. A student can study a few subjects or an entire semester in partnering Universities abroad and the credits earned will be transferred and given proper weight age while awarding a degree at KL.

# STUDY TOUR

Students of KL have an option to visit partner Universities abroad to get international exposure. Eg. One can visit Latrobe University, Australia as a part of a study tour and can attend the classes of foreign professors for a period of 7-10 days. In addition to academic exposure, they can learn about International Cultural issues by associating with foreign students.



# STUDENTS EXCHANGE

As a part of student exchange program KL & partner Universities depute their students to spend their time at Partner University. KL students can spend one semester abroad or complete their internship. Similarly, under the mutual exchange program, partner university students can spend one or two semesters' at KL. In both cases, credit transfer is made to enable the students to get their degrees at the respective University.



# INTERNSHIP ABROAD

KL Students have the advantage to complete both their project work as well as internship of 6-8 weeks at select Universities abroad. Under this agreement, KL students have the benefit of gaining hands-on experience in world class organizations and Industries.

# CUSTOMIZED SUMMER INTERNSHIP

KL Students have the opportunity to learn one course in Automation systems used in highly modern Laboratories in Sweden namely Production Technology Center, at University West, Sweden, during the summer. The students will get solid practical exposure to key principles in modern industrial automation

# 2+2 PROGRAM

KL Students can study their first two years at KL and the rest at partner Universities in USA, UK, Australia, Malaysia, Sweden, Thailand and Ireland.

# 3+1 PROGRAM (SPECIAL PROGRAM)

Under this scheme, students can study three years in KL and one year at University of Massachusetts USA. The students are eligible for a certificate from University of Massachusetts along with degree

# 3+1+1 PROGRAMS (SPECIAL PROGRAM)

In University of Massachusetts, the students are allowed to take admission into 4th year and after completion of 4th year, the students are eligible to do their Master's Degree, i.e. the students have an advantage of saving expenditure to a large extent. Specially, with Auburn University at Auburn, USA, the students, who opt for this (2+2) program, can join later for their postgraduate programs free of Tuition Fee. Similar benefits are explored with other Partner Universities.



# FLEXIBLE ADD-ONS LIKE INTERNATIONAL YOUTH LEADERSHIP AWARD

International linkages promote the student skills to build their career globally thus help themselves develop specialized knowledge, skills and hands on experience abroad. This program is envisaged in association with IUCEE. M. Tech Program leading to Ph.D: A special MOU signed with Asian Institute of Technology (AIT), Bangkok, Thailand enables KL Students at Masters Level to enroll themselves with AIT for their Ph.D. degrees.

## JOINT RESEARCH AND GUIDANCE UNDER FOREIGN SUPERVISORS

Meritorious students and research scholars at KL can seek research assistance from professors at partner Universities and leading research centers and jointly work with them towards their degrees at either place.

## FOREIGN LANGUAGES OFFERED

**French, Chinese, Japanese, German languages will be offered as per choice of students.**

# COURSE DELIVERY BY FOREIGN FACULTY

KL has a support of 300 plus expert faculty in various academic disciplines who have been delivering complete course work to the students of KL to bring in the best practices of academic learning systems like lab taken to class room to add value to academic learning.



**Groningen:** Netherlands.

**Poland:** Szewalski Institute of Fluid flow Machinery, Poland.

**Srilanka:** South Eastern University of Sri Lanka, Oluvil, Sri Lanka.

**Romania:** Technical University of Cluj Napoca, Romania.

**Ireland:** National college of Ireland, Dublin, Ireland.

## LIST OF PARTNER UNIVERSITIES

### AUSTRALIA:

Latrobe University, Bundoora Campus, Melbourne, Queens Land University, Deekins University

### CHINA:

Dalian Institute of Technology, Dalian.

Netherlands: Hanze University, DA Groningen, Hanze School





## SWEDEN:

University West, Trollhattan, Sweden  
Japan Kumamoto University.  
Malaysia University of Technology, Johor  
Bahru, Putrajaya a Business School.



## USA:

Stanford University, California State University,  
University of Texas, Dallas, A&M Texas  
University, State University of New York,  
(SUNY-B) Binghamton New York, USA, Indiana  
State University, Terre Haute, USA. University of  
New Orleans, USA University of Massachusetts,  
Srilanka South Eastern University of Sri Lanka,  
Oluvil, Sri Lanka. Romania Technical University  
of Cluj Napoca, Romania. Ireland National  
college of Ireland, Dublin, Ireland. Sweden  
University West, Trollhattan, Sweden Japan  
Kumamoto University. Malaysia University of  
Technology, Johor Bahru, Putrajaya a Business



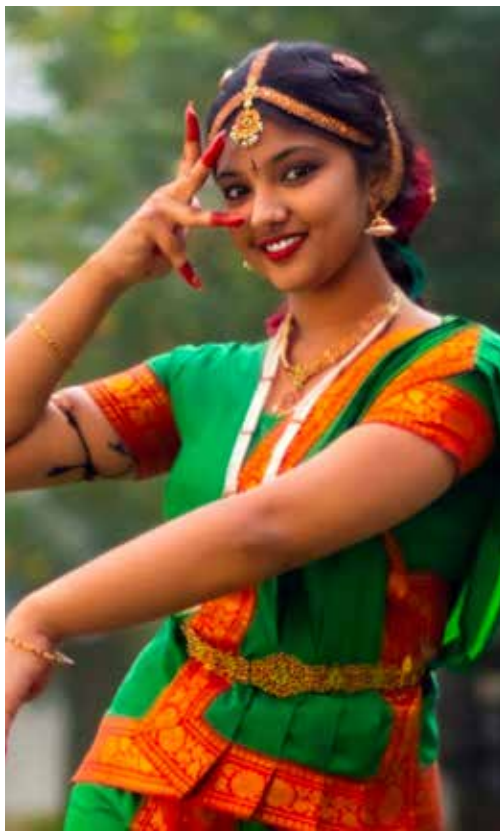
School. USA Stanford University, California  
State University, University of Texas, Dallas,  
A&M Texas University, State University of New  
York, (SUNY-B) Binghamton New York, USA,  
Indiana State University, Terre Haute, USA.  
University of New Orleans, USA University of  
Massachusetts, Lowell, USA. Jackson State  
University, Mississippi, USA St. Louis University,  
USA. Rutgers State University, New Jersey, USA  
DeVry University, USA. Villanova University,  
USA Central Michigan University, Michigan, USA  
Auburn University, Alabama, USA, International  
Technological University, USA Virginia Tech  
University, USA Florida International University,  
Florida California State University, USA.

## UK:

University of Plymouth, Drake Circus,  
Plymouth. The Robert Gordon University,  
Schoolhill, Aberdeen, United Kingdom Glasgow  
Caledonian University, Scotland, UK  
Singapore: PSB University











# DRIVEN BY KNOWLEDGE LEADING BY SKILL

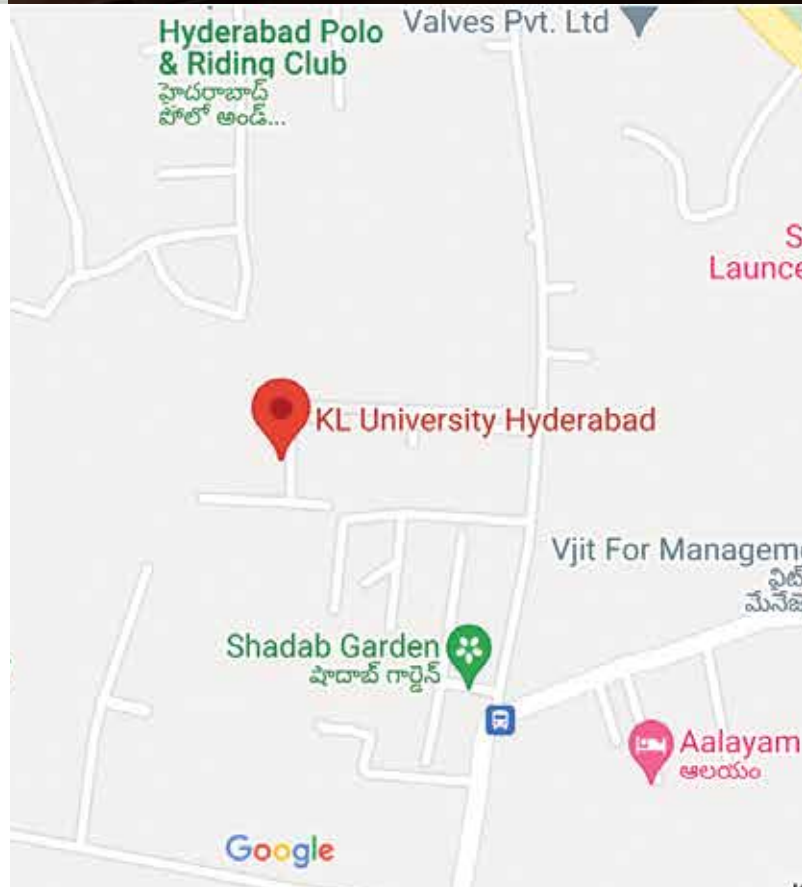


## Address:

Aziznagar, Moinabad Road  
Near TS Police Academy  
Hyderabad, Telangana  
India. Pin code : 500075

## Contact No:

+91 7997995734  
+91 7997998380



[www.klh.edu.in](http://www.klh.edu.in)

#WeAreFutureReady